

HDR



Speakers

Sabrina Colón, South-Atlantic
Strategic Communications Lead



Megan O'Reilly, Mid-Atlantic
Strategic Communications Lead

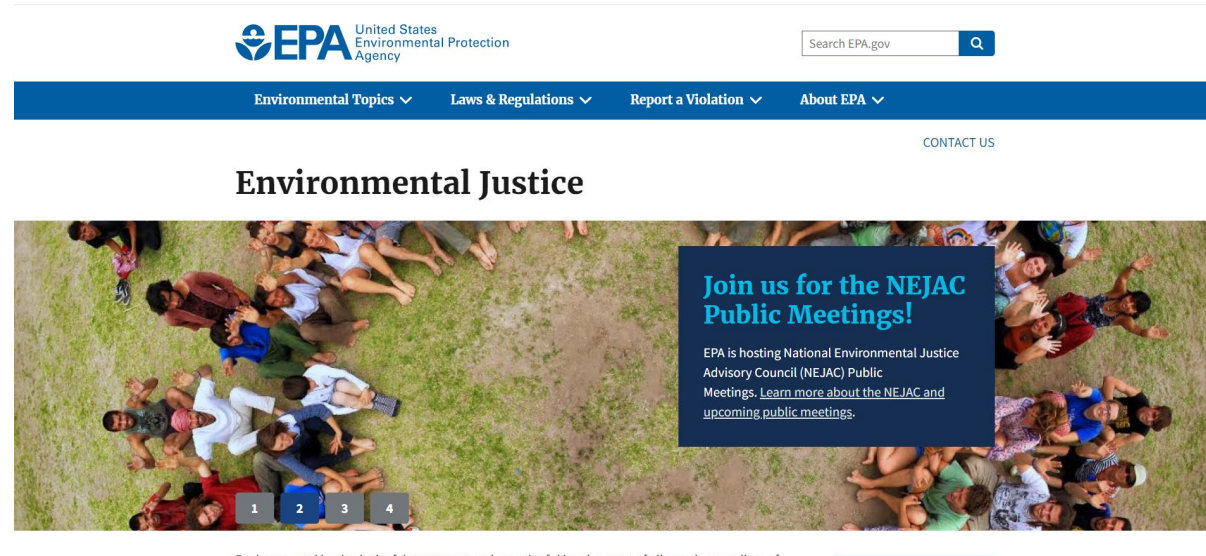
Navigating Environmental Justice

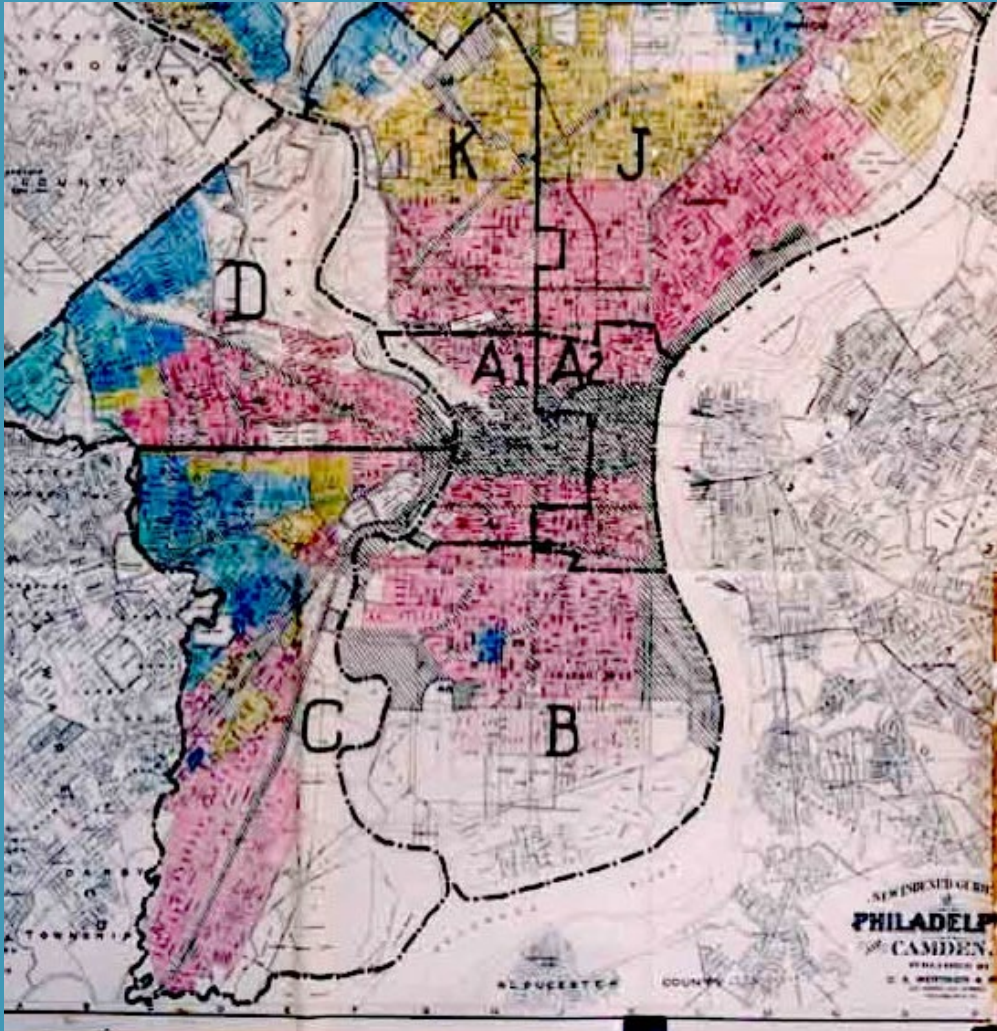
What is Environmental Justice?

[Environmental Justice | US EPA](#)

Environmental justice is the **fair treatment** and **meaningful involvement** of all people regardless of race, color, national origin, or income, with respect to the development, implementation, and enforcement of environmental laws, regulations, and policies. This goal will be achieved when everyone enjoys:

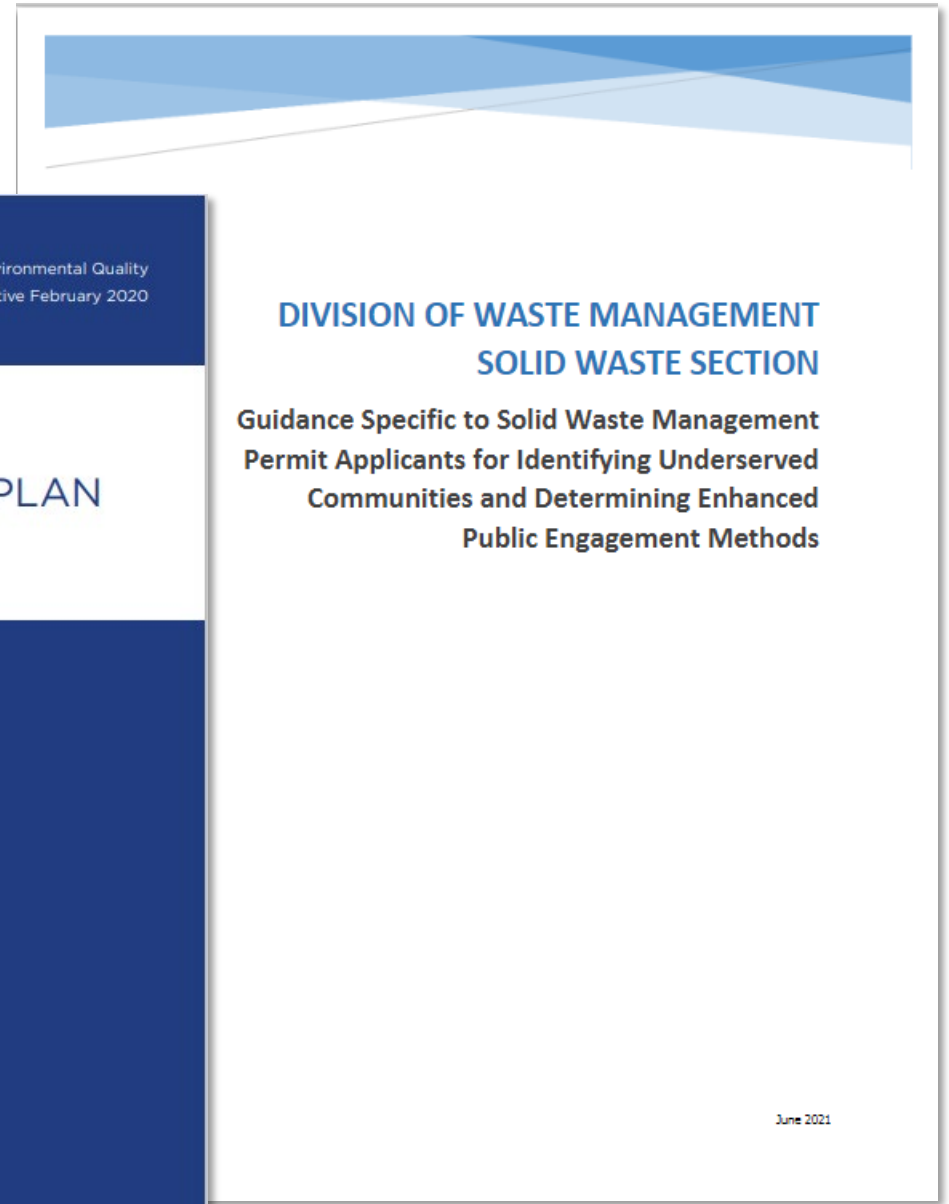
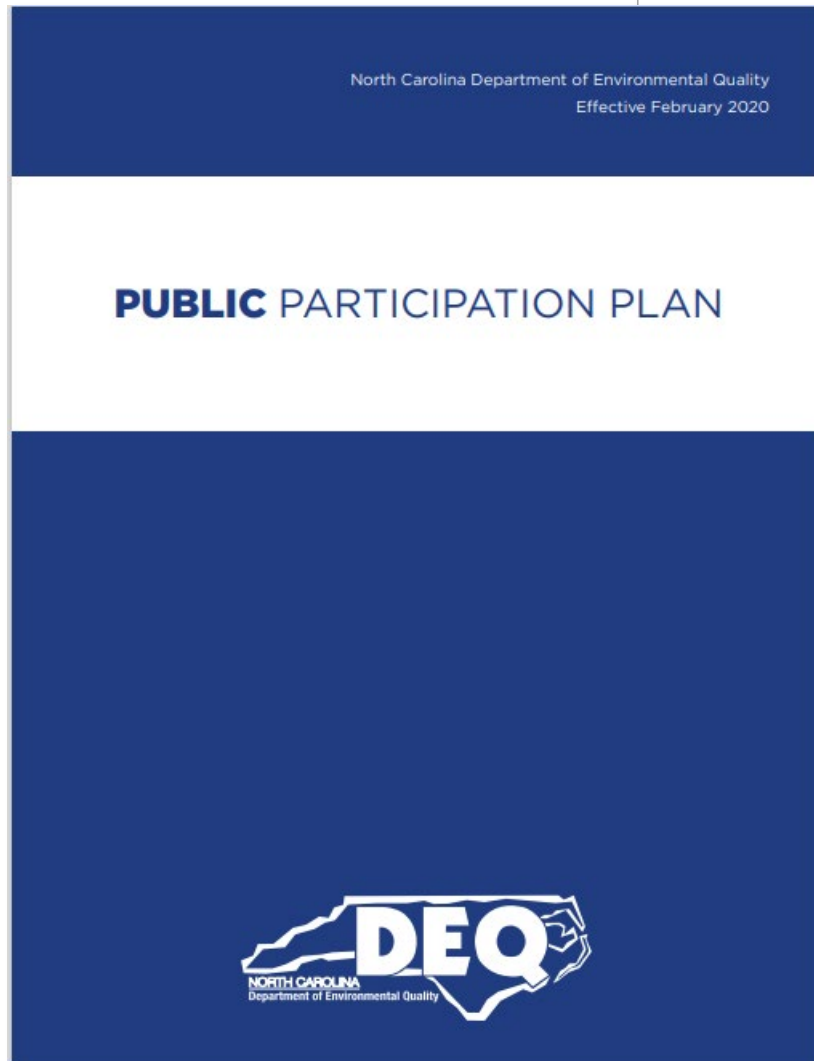
- **The same degree of protection from environmental and health hazards, and**
- **Equal access to the decision-making process to have a healthy environment in which to live, learn, and work.**





“Whether by conscious design or institutional neglect, communities of color in urban ghettos, in rural 'poverty pockets,' or on economically impoverished Native-American reservations face some of the worst environmental devastation in the nation.”

North Carolina Regulatory Protocols



Permit Actions Which May Require Enhanced Engagement

Sanitary
Landfills

Transfer
Stations

Incinerators

Waste-to-
Energy
Facilities

Large Compost
Facilities

Key Components of Successful Environmental Justice

- Conduct a community analysis
- Complete a environmental justice report
- Create a public involvement plan
- Intentionally engage communities in the process

Identifying Underserved Communities

- People of Color
- Low-Income
- Indigenous Communities
- Communities with EJ Concerns



EPA EJ Screening Tool

EPA Explore Reports

1 mile Ring Centered at 37.265037,-79.947510, VIRGINIA, EPA Region 3 (Population: 10,439)

Environmental Indicators | **Demographic Indicators** | EJ Indexes

[Unselect All]

- Demographic Index
- Linguistically Isolated
- Over Age 64
- People of Color Population
- Less Than HS Education
- Low Income Population
- Under Age 5

State Percentile
 Regional Percentile
 USA Percentile

Demographic Indicators for the Selected Area Compared to All People's Block Groups in the State/Region/US

Indicator	State Percentile	Regional Percentile	USA Percentile
Demographic Index	~60	~60	~65
People of Color Population	~50	~50	~75
Low Income Population	~55	~55	~65
Linguistically Isolated	~60	~60	~65
Less Than HS Education	~40	~40	~45
Under Age 5	~40	~40	~45
Over Age 64	~40	~40	~45

EJSCREEN Home | Mobile | Glossary | Help

Print Measure Save Session Basemap 24016

Map showing the selected area in Virginia, EPA Region 3, with various roads and geographical features labeled. The map includes a search bar with the number 24016 and navigation controls.

GIS-based Community Analysis

KEY FACTS

623,142

Population



2.3

Average Household Size

37.8

Median Age

\$71,361

Median Household Income

HOUSING



\$354,870

Median Home Value



\$10,959

Average Spent on Mortgage & Basics



\$960

Median Contract Rent

EDUCATION

6%

No High School Diploma



15%

High School Graduate



30%

Some College



49%

Bachelor's/Grad/Prof Degree

LANGUAGE



0%

Speak Spanish & No English (%)



0%

Speak Indo-European & No English (%)



0%

Speak Asian-Pacific Isl & No English (%)



0%

Speak Other Language & No English (%)

TRANSPORTATION



3%

Workers 16+ Took Public Transportation (%)



2%

Workers 16+ Bicycled (%)



76%

Workers 16+ Drove Alone to Work (%)



2%

Workers 16+ Walked (%)



9%

Workers 16+ Carpooled (%)

Race and Ethnicity

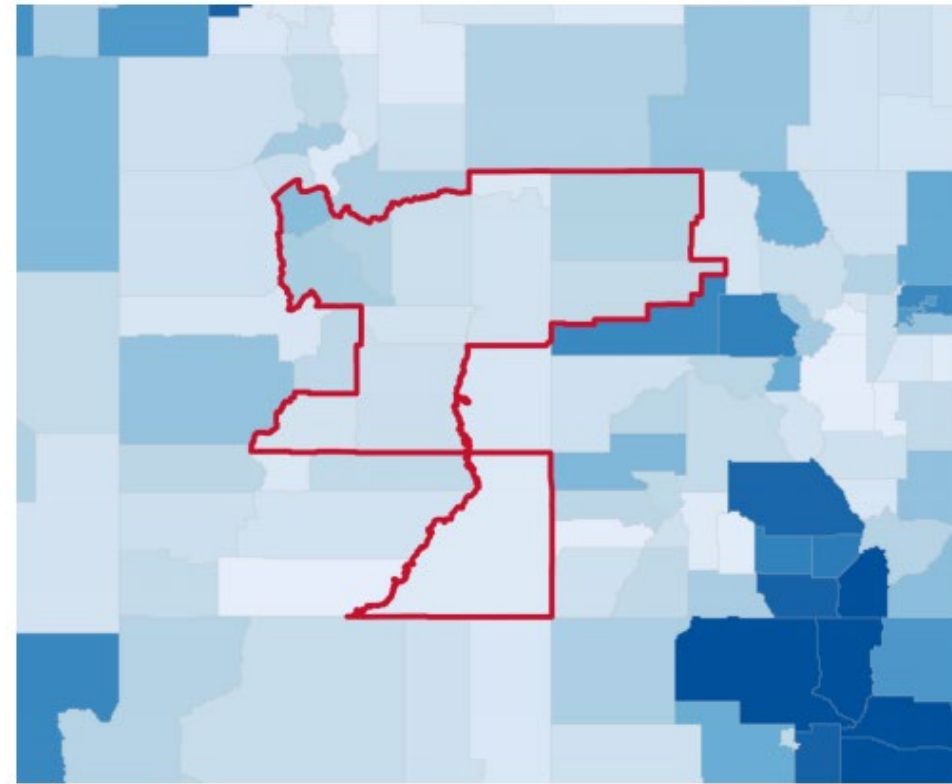
The largest group: White Alone (75.35)

The smallest group: Pacific Islander Alone (0.24)

Indicator	Value	Difference	
White Alone	75.35	+5.32	<div style="width: 50px; height: 10px; background-color: #0070C0;"></div>
Black Alone	5.27	+0.50	<div style="width: 5px; height: 10px; background-color: #0070C0;"></div>
American Indian/Alaska Native Alone	2.57	-2.03	<div style="width: 5px; height: 10px; background-color: #C00000;"></div>
Asian Alone	5.58	+2.13	<div style="width: 10px; height: 10px; background-color: #0070C0;"></div>
Pacific Islander Alone	0.24	+0.03	<div style="width: 2px; height: 10px; background-color: #0070C0;"></div>
Other Race	7.12	-5.85	<div style="width: 20px; height: 10px; background-color: #C00000;"></div>
Two or More Races	3.88	-0.08	<div style="width: 2px; height: 10px; background-color: #0070C0;"></div>
Hispanic Origin (Any Race)	18.91	-13.03	<div style="width: 30px; height: 10px; background-color: #C00000;"></div>

Bars show deviation from Arizona

ACS Language Spoken at Home (Percent Age 5+ Speak Spanish)

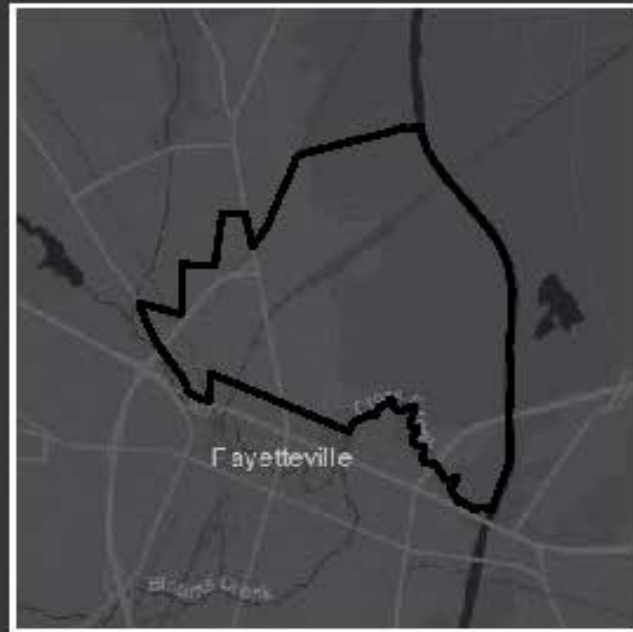


2013-2017 Population by Language Spoken at Home (ACS)	Total	Percent
Pop 18-64 speak Asian-Pacific Isl & No English	746	0.0%
Pop 18-64 speak Indo-European & No English	523	0.0%
Pop 18-64 speak Spanish & No English	6,650	0.4%
Pop 18-64 speak Other Language & No English	319	0.0%
Pop 65+ speak Asian-Pacific Isl & No English	442	0.0%
Pop 65+ speak Indo-European & No English	471	0.0%
Pop 65+ speak Spanish & No English	1,440	0.1%
Pop 65+ speak Oth Language & No English	145	0.0%



CORONAVIRUS (COVID-19) IMPACT PLANNING REPORT

Block Group 370510038.001



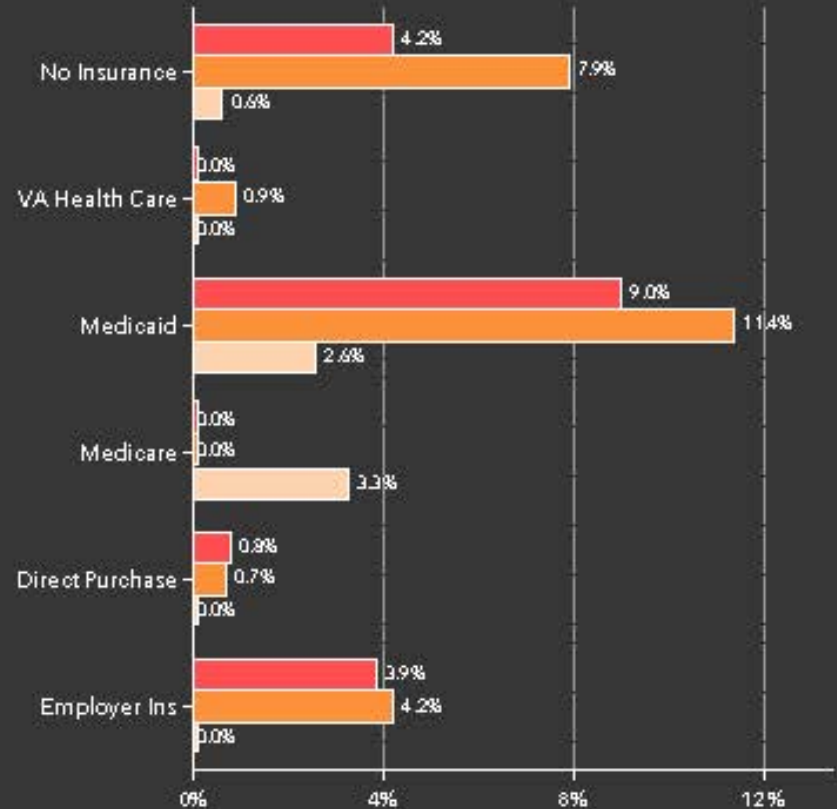
890	2.35	377	33.2	\$12,852	\$45,455	151	75%
Population	Avg Size Household	Households	Median Age	Median Household Income	Median Home Value	Housing Affordability	Internet at Home

POPULATION AND BUSINESSES

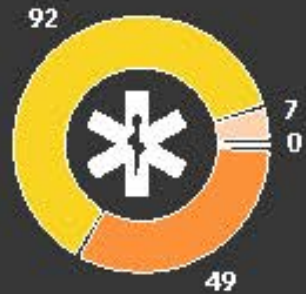


HEALTH INSURANCE COVERAGE (ACS)

Pop 19-34 Pop 35-64 Pop 65+



POPULATION NO HEALTH INSURANCE (ACS)



0-18 19-34 35-64 Age 65+

POVERTY

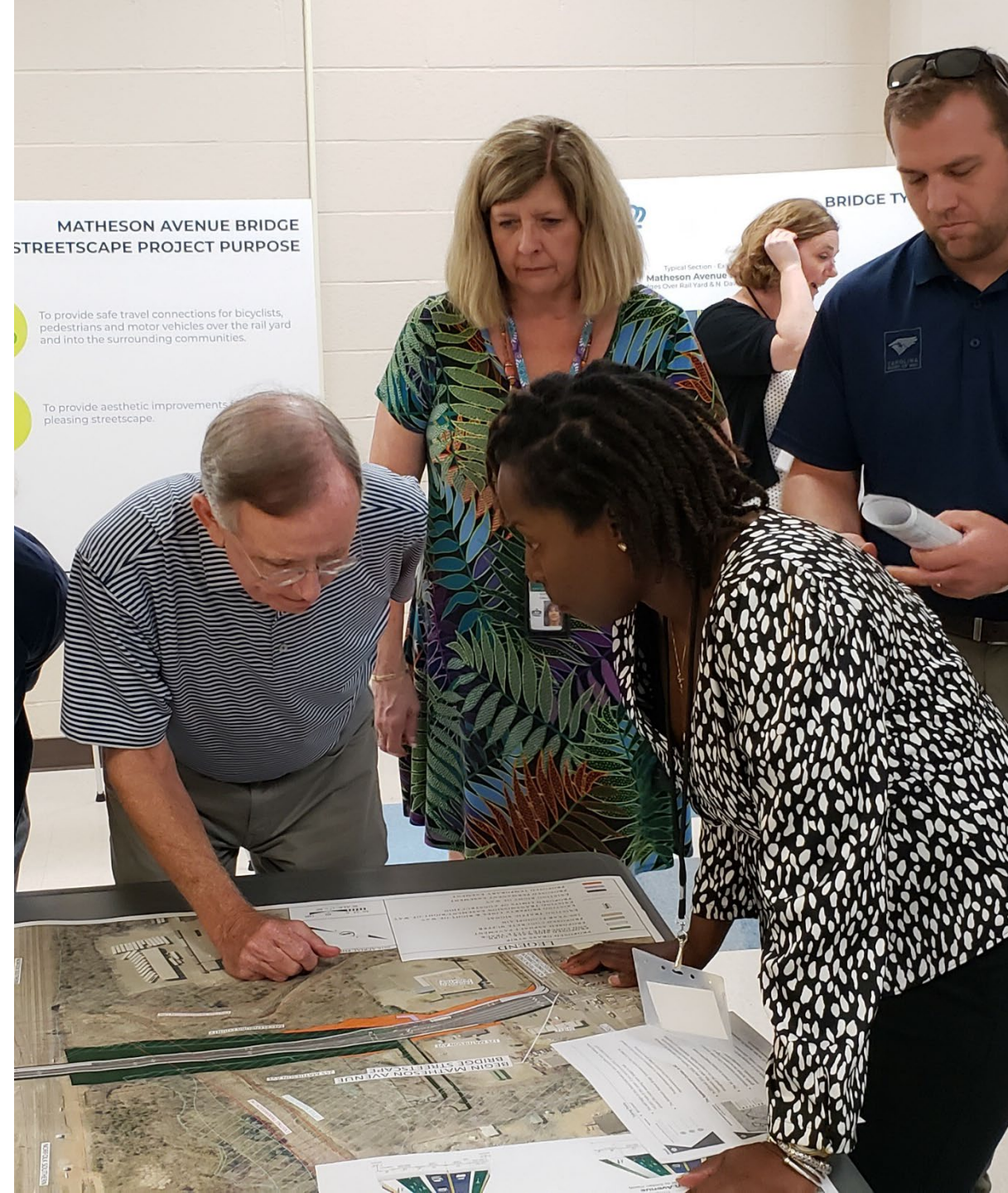


AT RISK POPULATION



Talk to the Community

- Community Groups
- Advocacy Groups
- Your Community Involvement Coordinators



Stakeholder Advocacy Interviews or Advisory Committees



Elements of an Environmental Justice Report

1. Review of the facility permit application
2. The potential impacts from the facility/operations
3. Consideration of the surrounding community, including demographics on race and ethnicity, income, and poverty levels
4. County health overview
5. Identification and location of potential sensitive receptors
6. The presence of other industrial or permitted sites
7. Limited English Proficiency (LEP) and the potential need for translation service

Elements of a Public Involvement Plan

- Public Involvement Goals
- Major Milestones
- Key Issue Identification and Methods to Address
- Key Messages
- Communication Tools and Tactics
- Media Plan
- Public Communication and Comment Management Protocol
- Monitoring and Evaluation



Set Clear Expectations

IAP2'S PUBLIC PARTICIPATION SPECTRUM

The IAP2 Federation has developed the Spectrum to help groups define the public's role in any public participation process. The IAP2 Spectrum is quickly becoming an international standard.

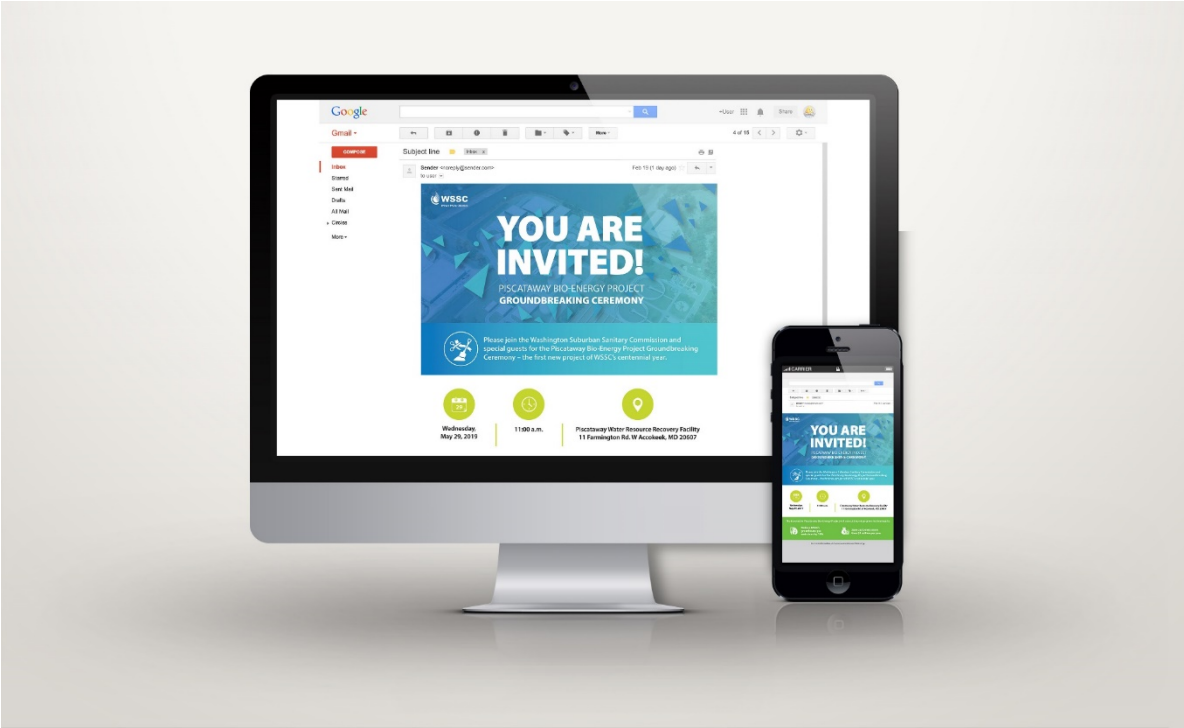
INCREASING IMPACT ON THE DECISION 

	INFORM	CONSULT	INVOLVE	COLLABORATE	EMPOWER
PUBLIC PARTICIPATION GOAL	To provide the public with balanced and objective information to assist them in understanding the problem, alternatives, opportunities and/or solutions.	To obtain public feedback on analysis, alternatives and/or decisions.	To work directly with the public throughout the process to ensure that public concerns and aspirations are consistently understood and considered.	To partner with the public in each aspect of the decision including the development of alternatives and the identification of the preferred solution.	To place final decision making in the hands of the public.
PROMISE TO THE PUBLIC	We will keep you informed.	We will keep you informed, listen to and acknowledge concerns and aspirations, and provide feedback on how public input influenced the decision. We will seek your feedback on drafts and proposals.	We will work with you to ensure that your concerns and aspirations are directly reflected in the alternatives developed and provide feedback on how public input influenced the decision.	We will work together with you to formulate solutions and incorporate your advice and recommendations into the decisions to the maximum extent possible.	We will implement what you decide.

Tools for Successful Outreach



Tools for Successful Outreach



Language Accessibility



DC2RVArail

December 9, 2017 · 🌐

Si necesita ayuda para la traducción de idiomas español en participar en este proyecto, por favor envíenos un correo electrónico a espanol@DC2RVArail.com. También puede llamar a la línea directa del proyecto a dejar comentarios: [888-832-0900](tel:888-832-0900). <http://bit.ly/1QxZ8i5>



Questions

