
Balancing Solid Waste Requirements with Risk Based Outcomes

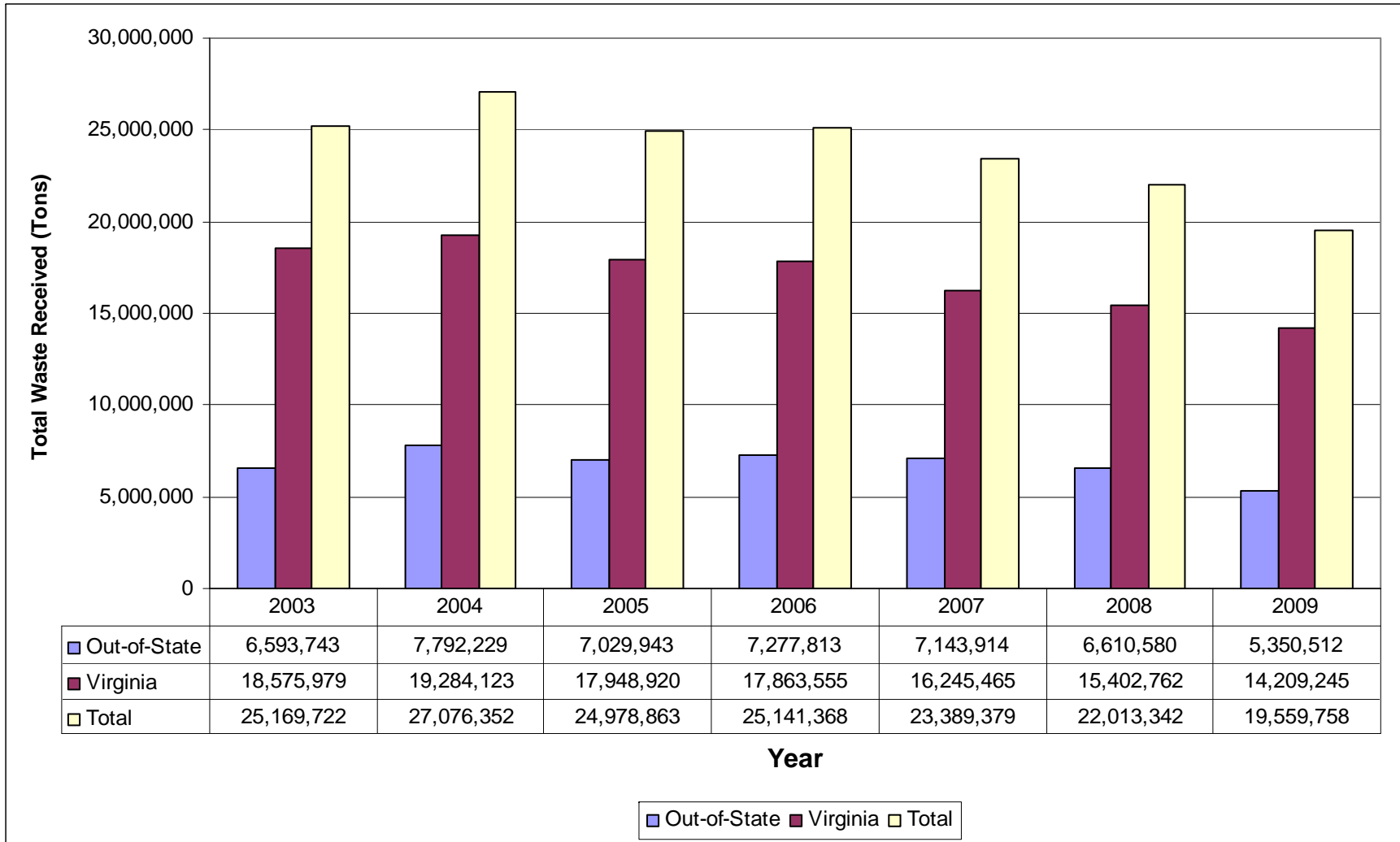
**SWANA Annual Conference
July 15, 2010**

**Jeffery Steers
Waste Division Director
Virginia DEQ**

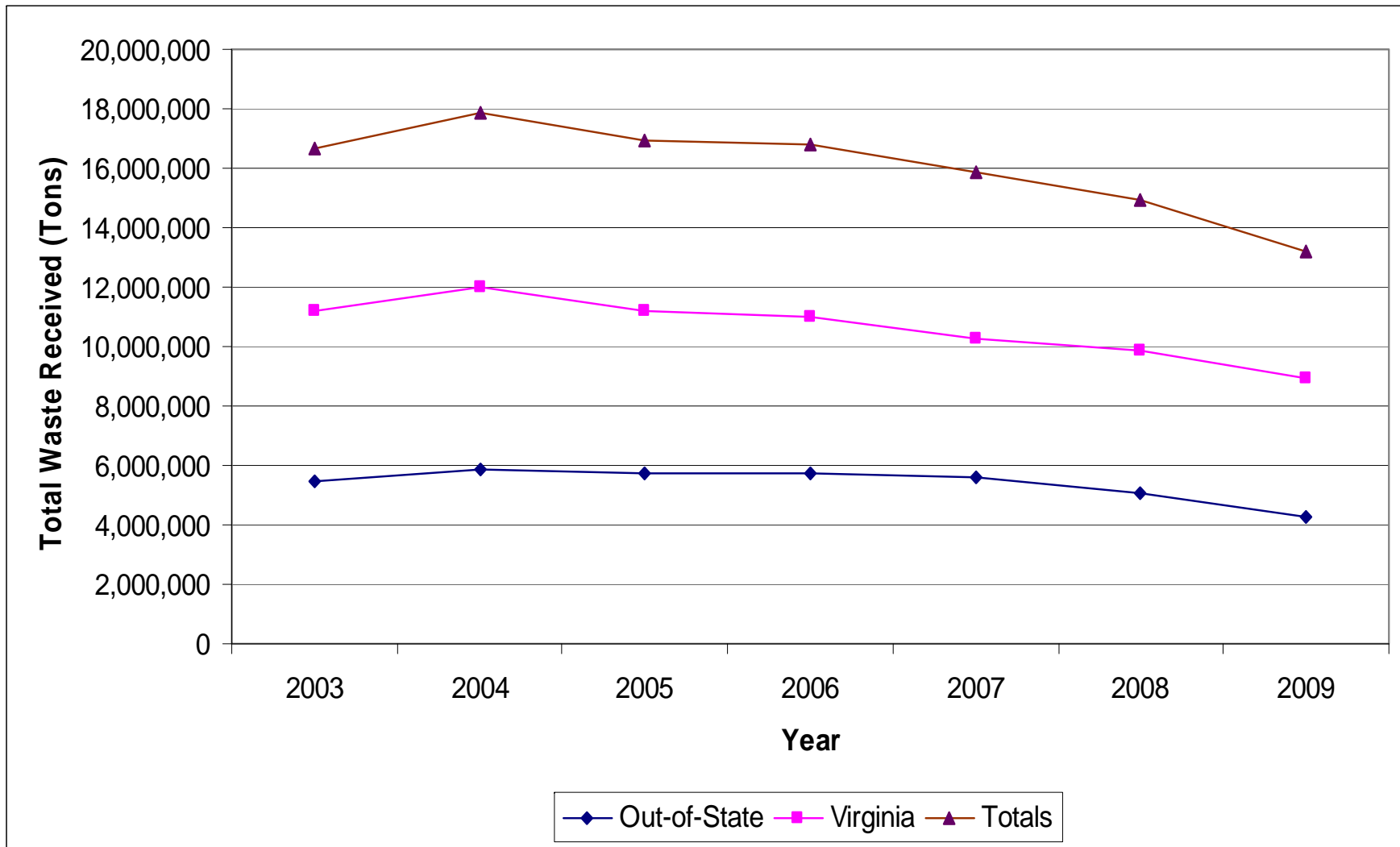
Balancing Solid Waste Requirements with Risk Based Outcomes

- **Managing Risk During Economic Downturns**
- **Identification of Potential Areas for Improvement**
- **Roadmap to Change & Agency Initiatives**
- **Stakeholder Input Process (what works, what needs help)**

Trends in SW Disposal



2003 – 2009 Waste Trending



“Why does a dog wag its tail? Because a dog is smarter than its tail. If the tail was smarter, the tail would wag the dog.”



So we ask ourselves, who is tail? who is the dog? and which is wagging which?

Managing Risk

- Move from letting our “processes” dictate and drive decision making to more risk based approaches tailored to individual site needs
- Results driven metrics to understand when a goal or requirement is met.

Risk Based Strategies For...

- Definition of a Solid Waste
- Compliance Evaluation Inspections
- Permitting
- Groundwater Monitoring
- Corrective Action
- Reporting/Recordkeeping & Beyond Compliance

Definitions of Waste

- Evaluating how we define and manage contaminated media moving forward.
- Risk based strategy using a tiered approach tied to industrial and residential RBCs
- Goal to beneficially re-use contaminated media in various engineering applications

Compliance Evaluation Reviews

- Solid Waste Inspection Manual
 - ❑ Outline how to conduct inspections, the levels of a violation and appropriate response
 - ❑ Finalizing fall of 2010
 - ❑ Will share with SWANA and the regulated community
- Solid Waste Inspector Team
 - ❑ Problem solving with management review
 - ❑ On hands training at partnering SW facilities (looking for more victims)

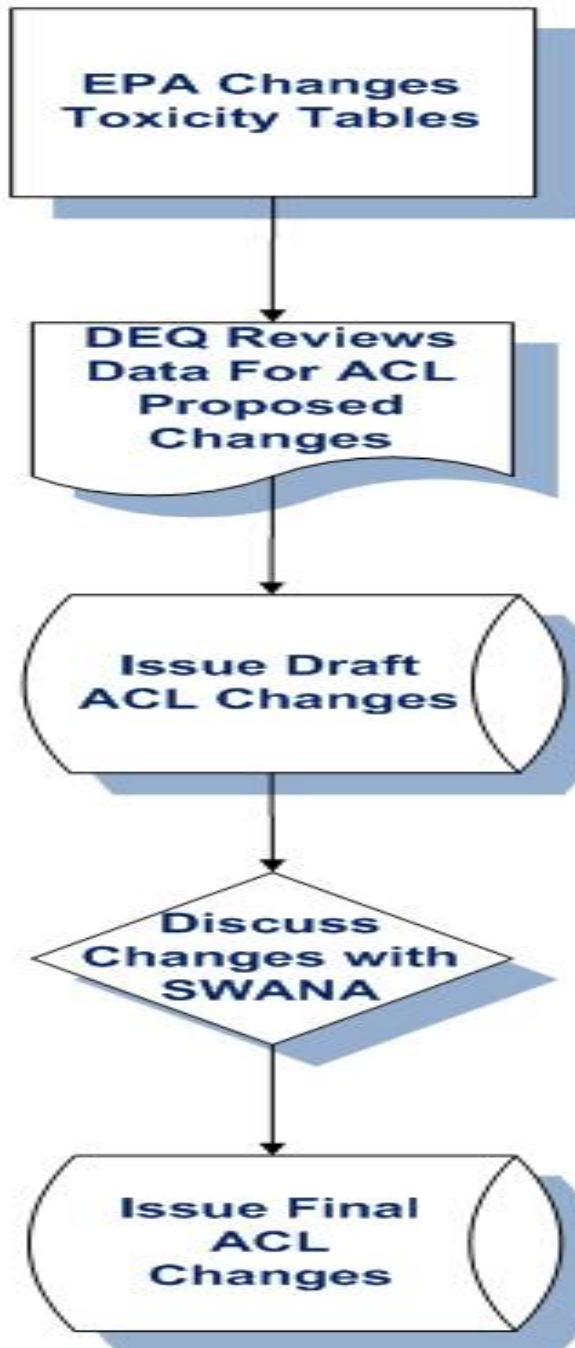
Permitting

- Awaiting signature of Amendment 7 by Governor, already planning needs for next round of efficiencies and will be soliciting ideas
- Streamlined permitting process concepts:
 - More self implementing provisions,
 - Focus on operational metrics and outcomes
 - Rely on PE design and certifications
 - Opportunities for more PBRs

Alternate Concentration Limits



ACL REVIEW TIMELINE



Fall Year 1

Spring Year 2

Summer Year 2

Fall Year 2

Fall Year 2

Winter Year 3

Alternate Concentration Limits

- Continue ACL site specific 10^{-5} process started in 2009 with modifications
 - Will allow for 60 discussion period with SWANA prior to issuing final revised ACLs
 - Only constituents lowered during review period can be considered
 - Site specific criteria as required in VSWMR must be demonstrated prior to submitting risk review
 - DEQ developing written submission instructions

Corrective Action

- DEQ appreciates and understands the \$ impacts related to groundwater monitoring and on facilities that exceed a GPS triggering Corrective Action
- Need to make progress and prioritize on sites where there are potential off site receptors
 - Using various tools to implement schedules, need enforceable mechanisms
 - Allowing some work to spread over different fiscal years to reduce economic impacts

Corrective Action

- Internal evaluation of “out of the box” thinking
 - Develop pre-Subtitle D regulatory scheme to address limits on options to deal with GPS exceedances.
 - Evaluate the development of a groundwater classification system in urban areas of the Commonwealth
 - Could allow us to consider use of the aquifer in decision-making
 - Evaluate a common risk level for carcinogens across all regulatory programs

Reporting and Beyond Compliance

- Working with our VEEP program, continue to explore opportunities related to reduced sampling frequency and reporting.
- Enhance program for self reporting of violations with self initiated corrective actions to return to compliance (how can we better encourage this)

Ongoing Solid Waste Initiatives

- Review Beneficial Use Determination (BUD) Process
 - Scope to include appropriateness of certain types of projects, and overall assessment of value



Ongoing Solid Waste Initiatives

- Value Stream Mapping of Our Processes to Look for Efficiency Gains
 - Need to think of our activities as a business process
 - Draw from some successes realized in our RCRA Subtitle C Corrective Action Program
- Internal Audit Function
 - Goal to ensure consistency and timeliness in permitting and compliance programs within the Waste Division

Ongoing Solid Waste Initiatives

- Implementing Amendment 7
 - ❑ Internal and external training being planned, partner with SWANA if possible
 - ❑ New permitting submission instructions being finalized
 - ❑ Crosswalk between old and new regulations completed
 - ❑ Revised inspection checklist
 - ❑ Running FAQ page to post to DEQ web page
 - ❑ Other guidance documents

Future Stakeholder Opportunities

- Waste Fee Stakeholder Group to Develop Recommendations for Funding SW Program (due to General Assembly in December 2010)
- Contaminated Media Input for Regulatory Changes
- Permit Streamlining
- Quarterly DEQ Waste Community Listening Sessions
- Compliance Training for DEQ Staff and Permitted SW Facilities

Questions

Jeff Steers

(804) 698-4079

jeffery.steers@deq.virginia.gov